



## DIGITUS® 483 mm (19") Wall Mounting Cabinets - Vandal-Proof



✓ IP20 and High Protection Level

✓ High Security Lock, 2 options

✓ Sturdy Vandal-Proof Design

✓ Available in three height units

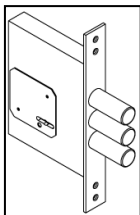
### Abstract

DIGITUS® Vandal-Proof Wall Mounting Cabinets, mechanical or electronic lock system,  
600 width - 600 mm depth

### Features

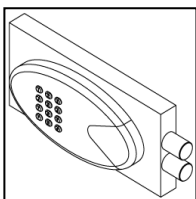
- Safety class rating IP20
- Security/Resistance level according to "DIN V ENV 1627 Level WK4" ("High protection")
- Front provides 30 mm strong steel protection due to flange system in combination with the door
- 100° door opening angle
- 483 mm (19") profile rails mounted on the front side inside of the cabinet, galvanized
- 483 mm (19") profile rails are adjustable in depth and with height unit marking
- Load capacity up to 200 kg (depending on the type of wall and its strength)
- Enclosure consists of a single welded construction which provides the strength for higher security
- Double layer welded steel material on rear side provides 5-6 mm strong protection for wall mounting
- 8x 47 mm (PG36) cable entries (2 pcs. each located on top, bottom and sides)
- 4x rear wall assembly holes (double layer welded)
- Ventilation slots for heat removal from enclosure
- Standard color: Grey (RAL 7035); other colors are available on request

### Lock System Options



#### Option 1 - Mechanical High Security Lock

- galvanized steel case, chrome plated
- with three chrome plated deadbolts made out of steel
- EN 12209



#### Option 2 - Electronic Locking

- with keypad and master mechanic barrel key
- password 4-6 digits
- with alarm and sound buzzer
- digital display screen
- logs for defining the opening by key
- external battery supply (at internal side of front door)
- with alarm when battery is low

### Product Overview

The Vandal-Proof Wall Mounting Cabinets are designed to fulfill the higher security needs in public areas under indoor conditions.

The safety aspects are evidenced by safety class IP 20 rating as well as the security/resistance level acc. to "DIN V ENV 1627 Level WK4". This is characterized by the following performance definition:

10 minutes protection against vandalism when used tools like saws or other tools (e.g. battery drill, hammer, axe, hacksaw, etc.). Features like the 30 mm strong front with a mechanical or electrical locking system and a double layer welded rear wall, will satisfy you to choose these cabinets. You can choose between two different locking systems. Option 1 is the mechanical locking system. It consists of a galvanized steel case which is chrome plated and three chrome plated deadbolts made out of steel. Option 2 is the electronic locking system which consists of a keypad and a master mechanic barrel key. Here you can choose a password out of 4-6 digits. This system will inform you about violence with an alarm sound buzzer.

### Product Number Information

Item code	Height unit (U)	Color	Locking-System
DN-19 07U-6/6-AV-1	7U	Grey (RAL 7035)	Mechanical
DN-19 09U-6/6-AV-1	9U		
DN-19 12U-6/6-AV-1	12U		
DN-19 07U-6/6-AV-2	7U	Grey (RAL 7035)	electronic
DN-19 09U-6/6-AV-2	9U		
DN-19 12U-6/6-AV-2	12U		

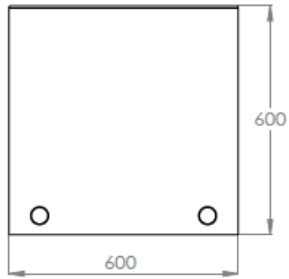
### Logistic Data

Item code	Product dimensions HxWxD in mm	Packaging dimensions HxWxD in mm	Net weight	Gross weight
DN-19 07U-6/6-AV-x	428 x 600 x 600 mm	450 x 650 x 650 mm	42 kg	44 kg
DN-19 09U-6/6-AV-x	517 x 600 x 600 mm	540 x 650 x 650 mm	47 kg	49 kg
DN-19 12U-6/6-AV-x	650 x 600 x 600 mm	670 x 650 x 650 mm	54 kg	57 kg

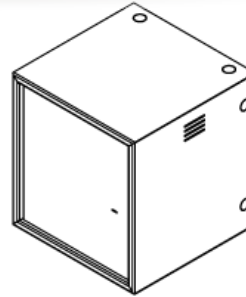
**Product Images**



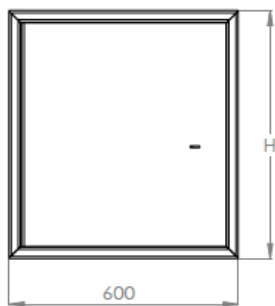
## Technical Drawings



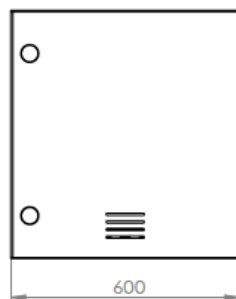
BOTTOM VIEW



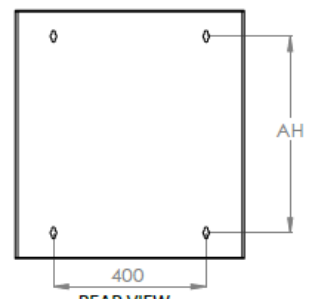
ISOMETRIC VIEW



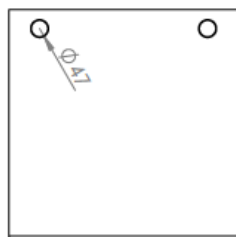
FRONT VIEW



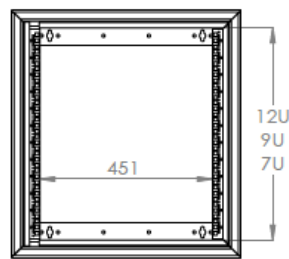
SIDE VIEW



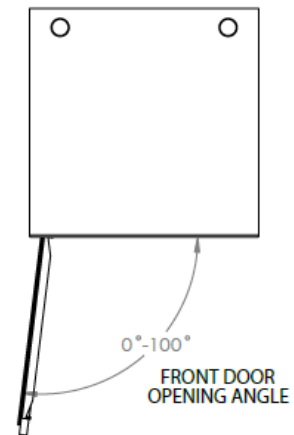
REAR VIEW



TOP VIEW



19" PROVISION



FRONT DOOR  
OPENING ANGLE

